



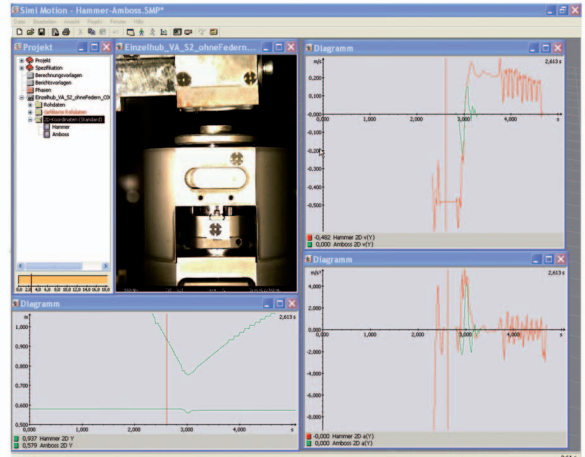
Simi Motion2D/3D

simi
your movolution

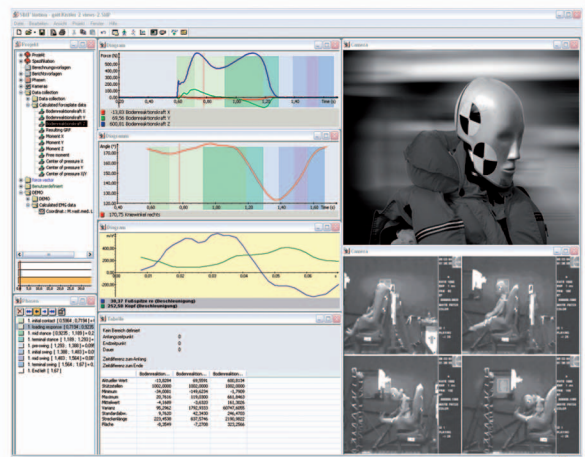
High Speed Motion Analysis System

Simi Motion allows the recording of high speed movements direct to the hard disk and 3 dimensional analysis of them. Synchronous capturing of different industrial cameras and analogue sensors enables you to analyze complex topics very easily. The software supports any hardware configuration. Import and export to current formats enable an easy further use of the data.

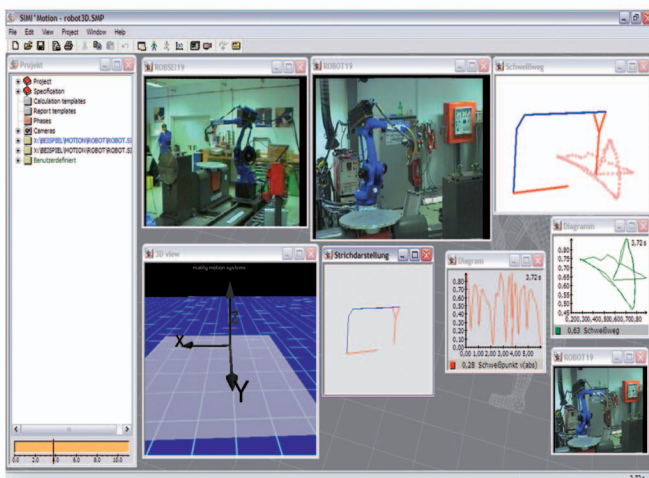
Simi Motion measures and compares among others kinetic and kinematic data, distances, velocities, accelerations, angles, frequencies or external sensor data. Extensive possibilities to edit and visualize the data make it possible to understand, proof and communicate complex dependencies.



- Movement analysis ✓
- process control ✓
- ergonomics ✓
- biomechanics ✓
- material control ✓
- Research & Development ✓



Synchronous display of 3 dimensional movement, sensor and video data show transparent analysis



Simi Motion can be used with different configurations. For example:

- 4 cameras with 500 fps
 - 18 cameras with 100 fps
 - 8 cameras with 200 fps
- and with external sensor data.

All current standards are supported.

Simi Reality Motion Systems GmbH
Max-Planck-Str. 11
D-85716 Unterschleißheim
Telefon: +49-89-321459-0
Telefax: +49-89-321459-16

www.simi.com

