

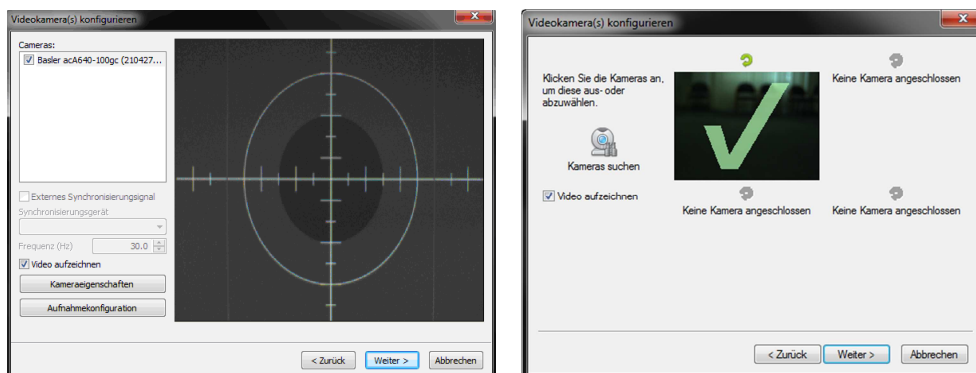
Release of Aktisys 1.2

5.3.2012

Simi is happy to announce the new Simi Aktisys 1.2 release. The new version mainly takes into account customer feedback about practicability and integration in everyday use. Beside some smaller optimizations and fixes, the latest Aktisys Version includes **three main improvements to simplify daily use. With the new features the system is able to operate in even more areas.**

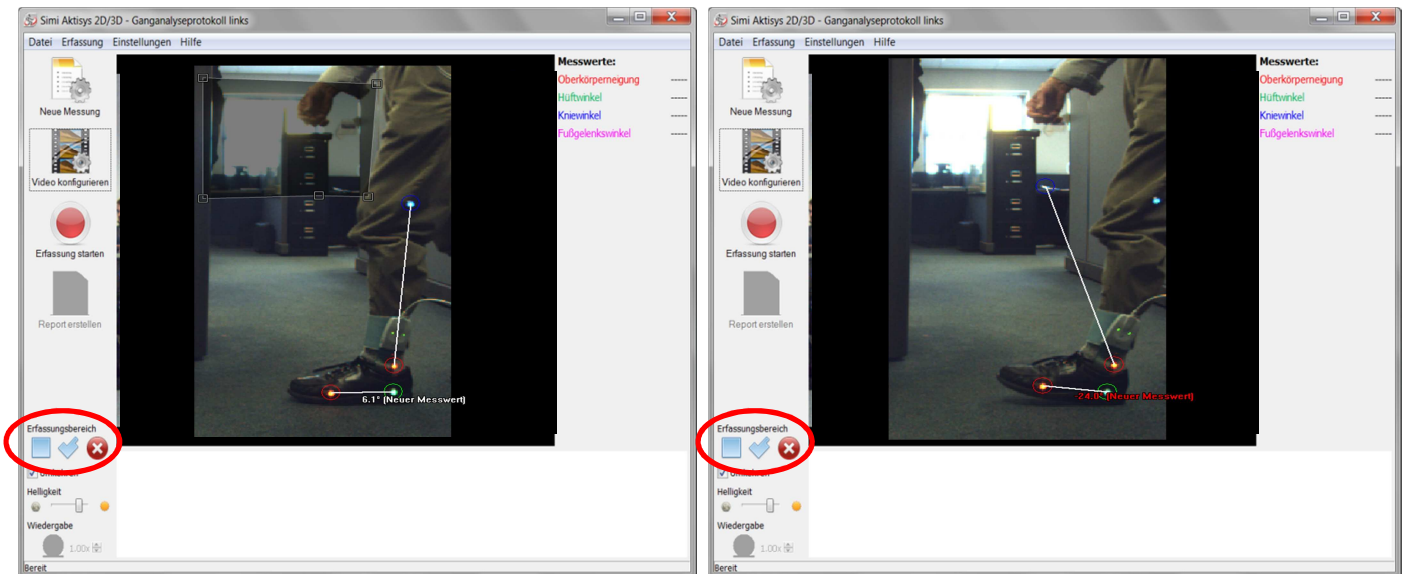
1. Camera Selection

In the first version of Aktisys the dialog to select camera source and recording options was a little confusing to some users. The dialog has been changed and now immediately shows all live pictures of supported cameras. To select a camera just one click on the image is necessary and the camera can easily be rotated by one button. See the old Dialog on the left side below and the new one on the right side.



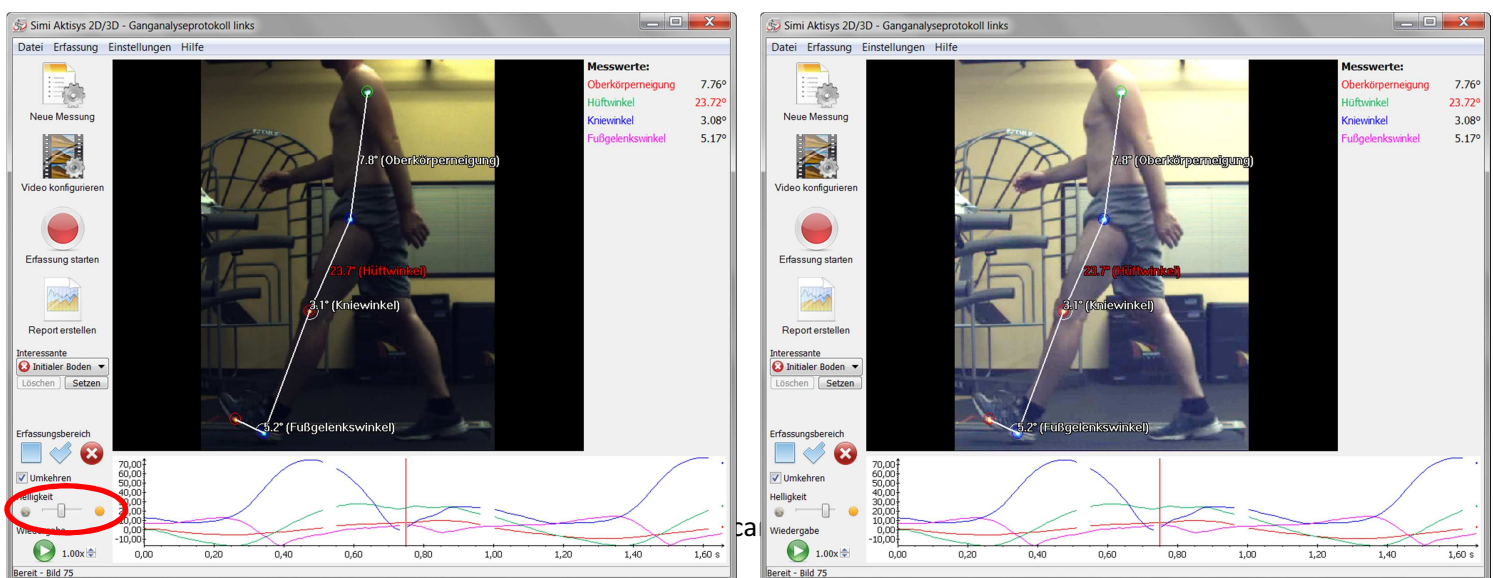
2. Area of interest

Aktisys is the easiest and fastest way on the market to provide dynamic angle data in real-time. One problem was that the tracking was sensitive to background conditions like windows or PC monitors. As Aktisys is meant to be used in **every environment in daily clinical and training situations** a new feature has been integrated to easily exclude areas out of interest. This guarantees an **easy and smooth real-time tracking in every environment**. The right picture below shows a “marker like” point in the background that leads to tracking failure. In the left picture an Area of interest has been drawn to exclude the reflection. To draw the area of interest easy drawing tools are available. These are easy to handle, like in any windows drawing program.



3. Video brightness

To assure a perfect tracking and capture high speed movements, shutter time and video brightness were often set quite low which lead to a rather dark video, uncomfortable for patient visualisation and discussion. The **new brightness feature** now allows to artificially **brightening the video after real-time tracking**. The original video can stay dark for an easy and smooth tracking and just for patient visualisation the user can define the **video brightness to any level**. With this feature much less camera adjustment is necessary. The brightened pictures will also be used in the report. Below picture shows the original video recording (left picture) and the artificially brightened patient video (right side).



Update process

The new update is available cost free. We also offer the possibility to book a remote session to help with the update process and give training on latest functions. Please get in contact with us at service@simi.com

Your Simi Team