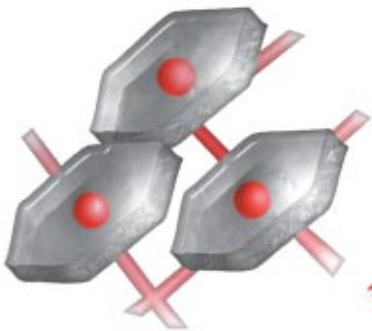
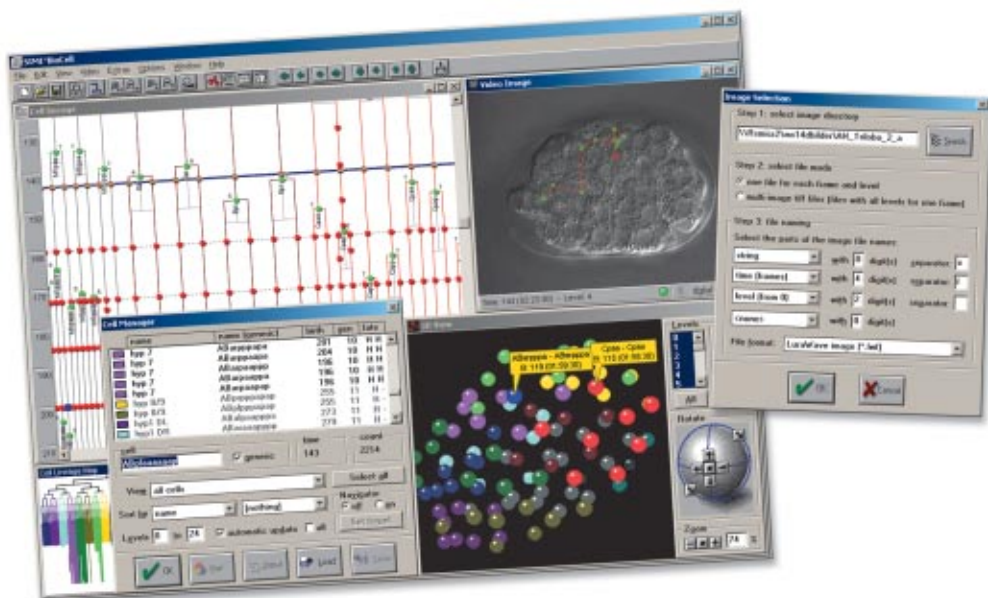


Biogenetic Cell Research



SIMI°BioCell



# Application

With SIMI°BioCell it is possible to capture the entire evolution of an embryo, to track it and to document it objectively. Starting with single cells, the capabilities of SIMI°BioCell go as far as studying the entire cellular evolution of a complete, complex creature.

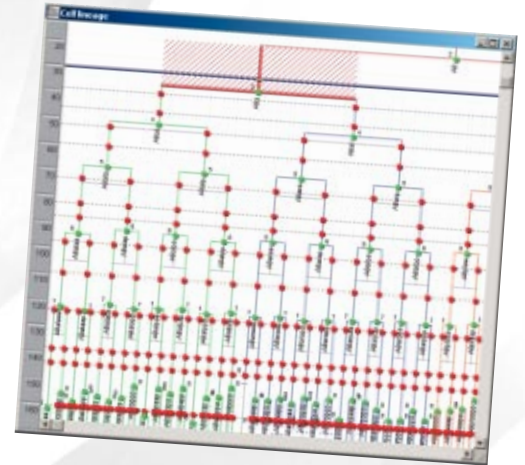
The rapid, software-based data acquisition and analysis is a basis for scientific argumentation with well-founded database documentation. Acquisition is based on microscopic video recording of cell evolution. Utilizing suitable recordings also depth information can be processed.

SIMI°BioCell and the methods of working were developed with the friendly assistance of Prof. Dr. Ralf Schnabel at the Technical University at Brunswick (Germany, Institute for Genetics) and were tested for many years in practical use.



# Advantages

- simple and efficient data acquisition on video image with the mouse
- miscellaneous utilities for acquisition like collision detection, temporal fixed points etc.
- arbitrary reference project as source and basis for comparison for new projects
- direct comparison of several projects
- grouping cells by color marking
- export and import of data possible
- nearly any image and video sources:
  - video files (AVI)
  - single image sequences (TIFF)
  - support for wavelet compression (LuraWave)
  - analog image data via convenient hardware
  - optional recorder control via RS-232 interface

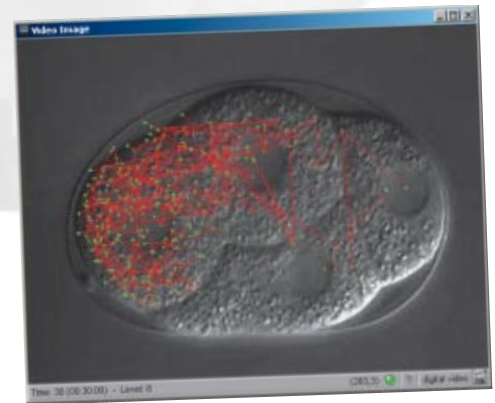


# Presentation

- detailed cell lineage
- two- as well as three-dimensional views of cell positions, cell movements and mitoses
- flexible listing and filtering by cell names, cell attributes and events

# System requirements

- Microsoft Windows 98 or higher (also Windows 3.1 with restrictions)
- PC with at least 32 MB memory (depending on operating system)
- hard drive with 10 MB free space, for digital image and video data several GB



# Our products

 **SIMI°Motion**  
2D and 3D Motion Analysis

 **SIMI°MoStill**  
Video Measurement and Documentation System

 **SIMI°Scout**  
Game, Tactics and Behaviour Analysis

 **SIMI°MotionCapture 3D**  
3D Motion Tracking System

 **SIMI°Twiner Pro**  
2D Still Image Measurement

 **SIMI°BioCell**  
Biogenetic and Cell Research

Your Partner

SIMI. Keep moving.

[www.simi.com](http://www.simi.com)

SIMI Reality Motion Systems GmbH • Postfach 1518 • D-85705 Unterschleissheim • Germany  
Phone +49 (89) 321459-0 • Fax +49 (89) 321459-16 • Internet [www.simi.com](http://www.simi.com) • E-mail [simi@simi.com](mailto:simi@simi.com)